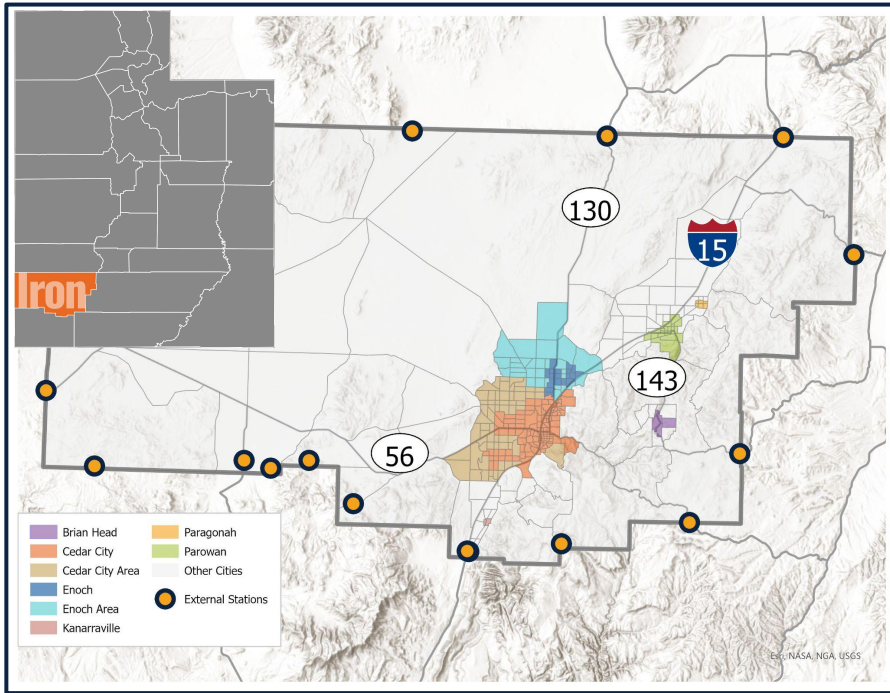


# Iron County Travel Demand Model



## MODEL CHARACTERISTICS

- **Model Type:** Trip-based
- **Geographic Projection:** NAD 1983 UTM Zone 12
- **Scenario Years**
  - Base Year: 2019
  - Plan Opening Year: 2023
  - STIP Year: 2028
  - Horizon Years: 2032, 2042, 2050
- **Model day:** average weekday
- **Time Periods:** AM, midday, PM, evening, and daily
- **Internal TAZs:** 360 (1-360)
- **External Stations:** 16 (401-406)
- **Trip Types:** internal resident, visitor, recreation, external, and commercial (light, medium, and heavy trucks)
- **Unique Components**
  - College: Southern Utah University
  - Seasonality: Spring/Fall, Winter, Summer (includes secondary homes, condos, cabins, and hotels).  
**Spring/Fall only calibrated season.**
  - External forces: telecommute, eCommerce, CAVs
  - Recreation: Brian Head and Cedar Breaks
  - No transit: daily ridership too low
- **Current version:** v1.0 (2023-01-17)
- **Run Time:** ~10 minutes
- **Subarea ID:** 5 (used for the statewide model)

## SOFTWARE CHARACTERISTICS

- **Model Software:** Cube 6.4.5
- **ArcGIS version:** 10.6
- **Platform:** Cube Catalog

## POINT OF CONTACT

**Natalia Brown:** nataliabrown@utah.gov