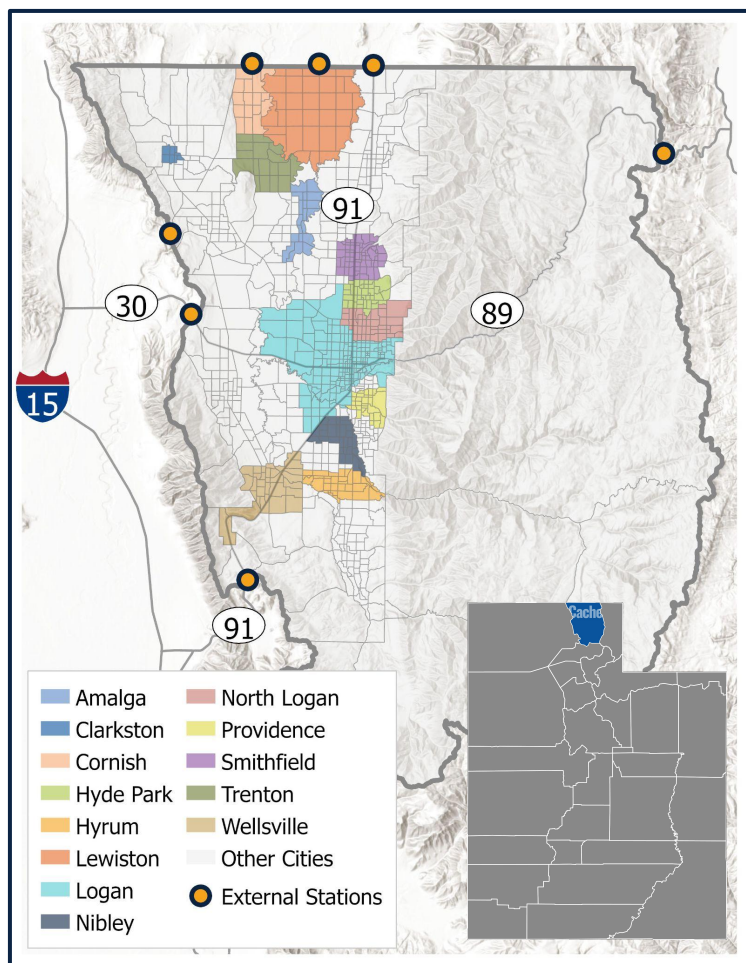


Cache Travel Demand Model



MODEL CHARACTERISTICS

- **Model Type:** Trip-based
- **Geographic Projection:** NAD 1983 UTM Zone 12
- **Scenario Years**
 - 2019 (base year), 2023 (plan opening year), and 2028 (STIP year)
 - Plan Years: 2032, 2042, 2050
- **Model day:** average weekday
- **Time Periods:** AM, midday, PM, evening, and daily
- **Internal TAZs:** 943 (1-943) & **External Stations:** 9 (980-988)
- **Trip Types:** internal resident, visitor, recreation, external, and commercial (light, medium, and heavy trucks)
- **Unique Components**
 - College: Utah State University
 - Seasonality: Spring/Fall, Winter, Summer built into model; data and calibration complete only for Spring/Fall.
 - External forces: telecommute, eCommerce, CAVs
 - Recreation: functionality built in but no destinations modeled.
- **Current version:** v3.1 2023-01-04
- **Run Time:** ~30 minutes
- **Subarea ID:** 2 (used for the statewide model)

SOFTWARE

- **Model Software:** Cube 6.4.5
- **ArcGIS version:** 10.6
- **Platform:** Cube Catalog

POINT OF CONTACT

Jeff Gilbert (Cache MPO): Jeff.Gilbert@cachecounty.org